

Environmental scanning to inform a mobility-promoting integrated care model: EMBOLDEN

Abbira Nadarajah¹, Salwa Siddiqui¹, Caroline Moore¹, Eugenia Ling¹, Chwen Binkley³, Christine Siu¹, Amanda Kennedy¹, Rebecca Ganann¹, Bruce Newbold², on behalf of the EMBOLDEN study team

¹School of Nursing, ²School of Earth, Environment and Society, McMaster University, ⁶City Of Hamilton, Public Health Services

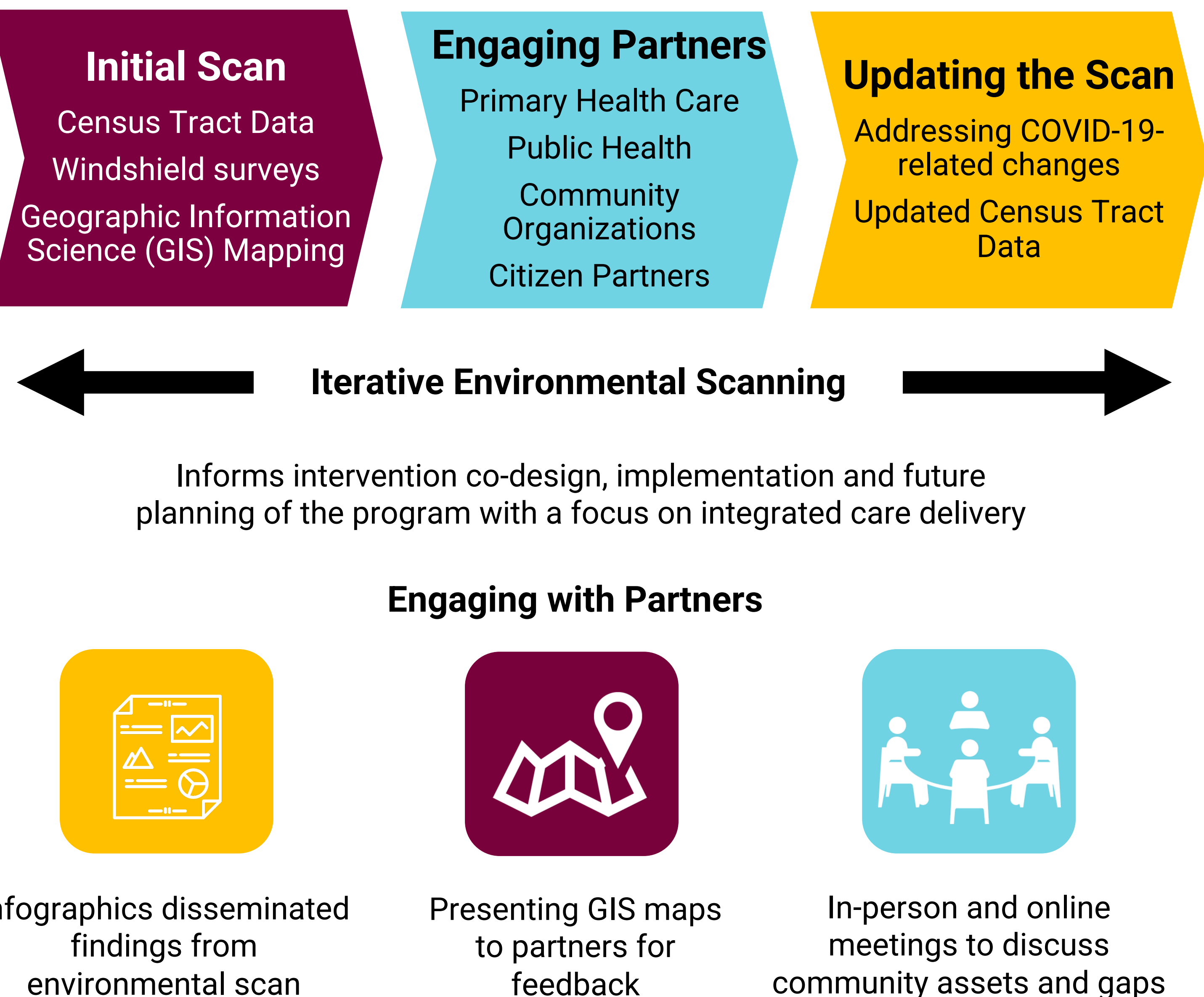
Context

- The EMBOLDEN study aims to promote physical and community mobility amongst older adults who experience difficulties taking up community programs and reside in areas of high health inequity.
- Environmental scanning is key to informing policy, planning, and program development.
- Iterative environmental scanning was conducted to inform pragmatic implementation and to partner with health and social service organizations in integrated care delivery.

Objectives

- To provide contextual information about the current state of programs in Hamilton.
- To collaborate with primary health care (PHC), public health, and community organizations as well as citizen partners to expand understanding of assets and identify gaps in programs and services.
- To identify and reassess priority neighbourhoods in Hamilton based on key indicators.

Methods



Results

Identifying Priority Neighbourhoods

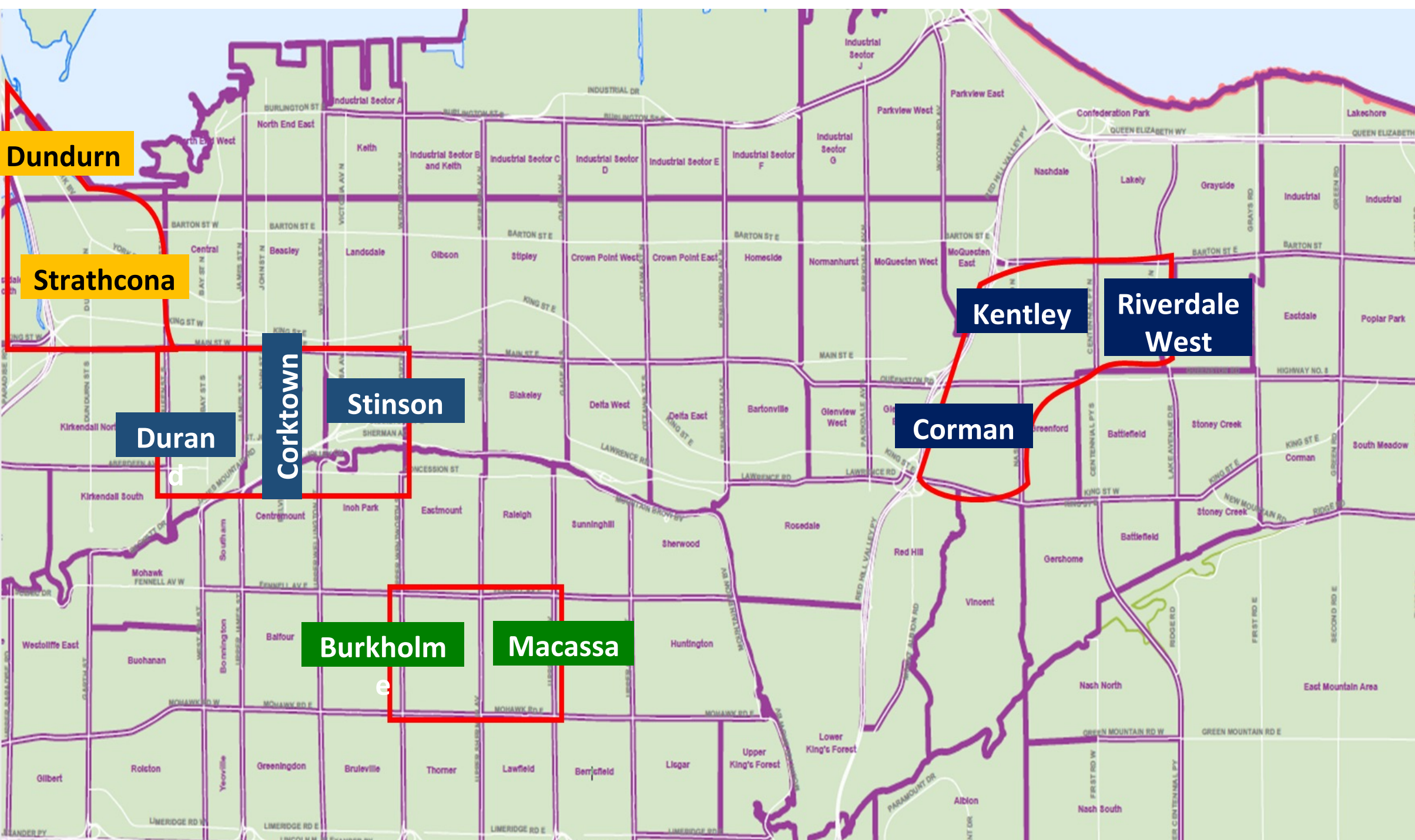


Figure 1: Identified priority neighbourhoods based on 2016 census tract data analysis.

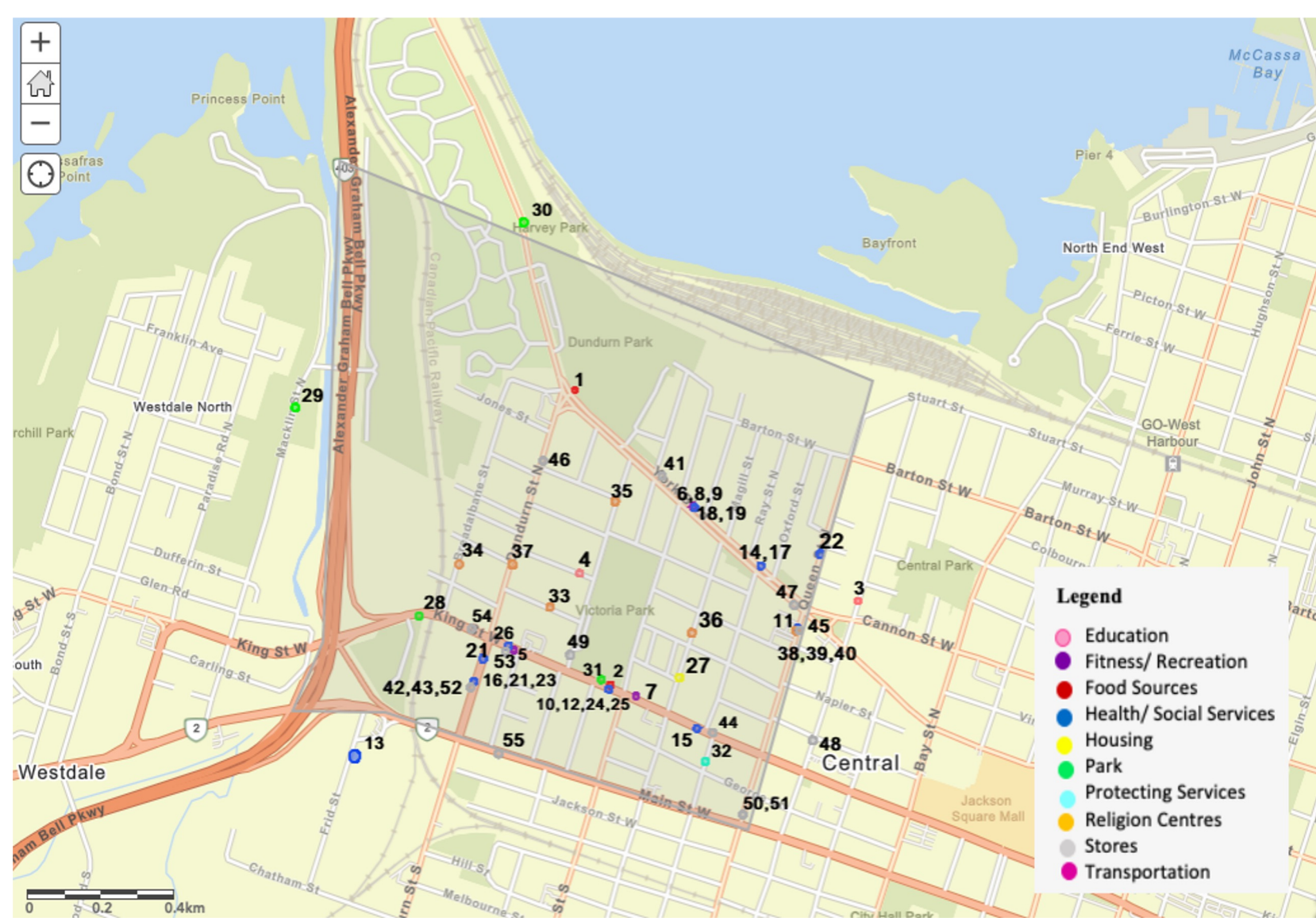


Figure 2: Examples of GIS maps created to identify health and social service assets for the Strathcona neighbourhood.

Partner Engagement

- Citizen partners and service providers addressed a more nuanced understanding of available community assets and how people interact with them, and highlighted implementation considerations.
 - E.g., PHC providers identified opportunities to take the lead role in facilitated system navigation to support the integration of health and social care.
- The intervention design team used findings to position the multi-component EMBOLDEN intervention to be integrated into this context.

2016 – 2023 Comparison of Priority Neighbourhoods

Table 1: A comparison of key population indicators using 2016 and 2021 census tract data¹

Neighbourhood	Total Population		Individuals 55 y+ n (%)		Material deprivation (quintile)		< Low income cut-off n (%)		Immigrant n (%)	
	2016	2021	2016	2021	2016	2021	2016	2021	2016	2021
Riverdale West	6,550	6804	30	31	5	5	2.4	1.0	46	44
Kentley	3,993	4007	43	43	5	5	5.4	2.0	40	35
Durand	3,914	4172	41	40	4	4	6.5	2.8	28	23
Stinson and Corktown	5,258	5,691	24	24	5	5	2.1	0.9	35	36
Corman	3,397	3476	40	41	5	5	2.5	1.0	33	34
Burkhome	3,601	3580	34	34	5	5	3.6	0.8	29	31
Strathcona and Dundurn	3,140	3,131	40	41	4	5	6.5	3.4	28	28
Macassa	2,533	2,584	49	48	4	4	2.8	1.2	19	20

Legend
The key indicator was met by the neighbourhood.
The key indicator was not met by the neighbourhood.

- The 2023 environmental scan update, confirmed that these 8 neighbourhoods remained priority communities in Hamilton.

Knowledge Translation Tools

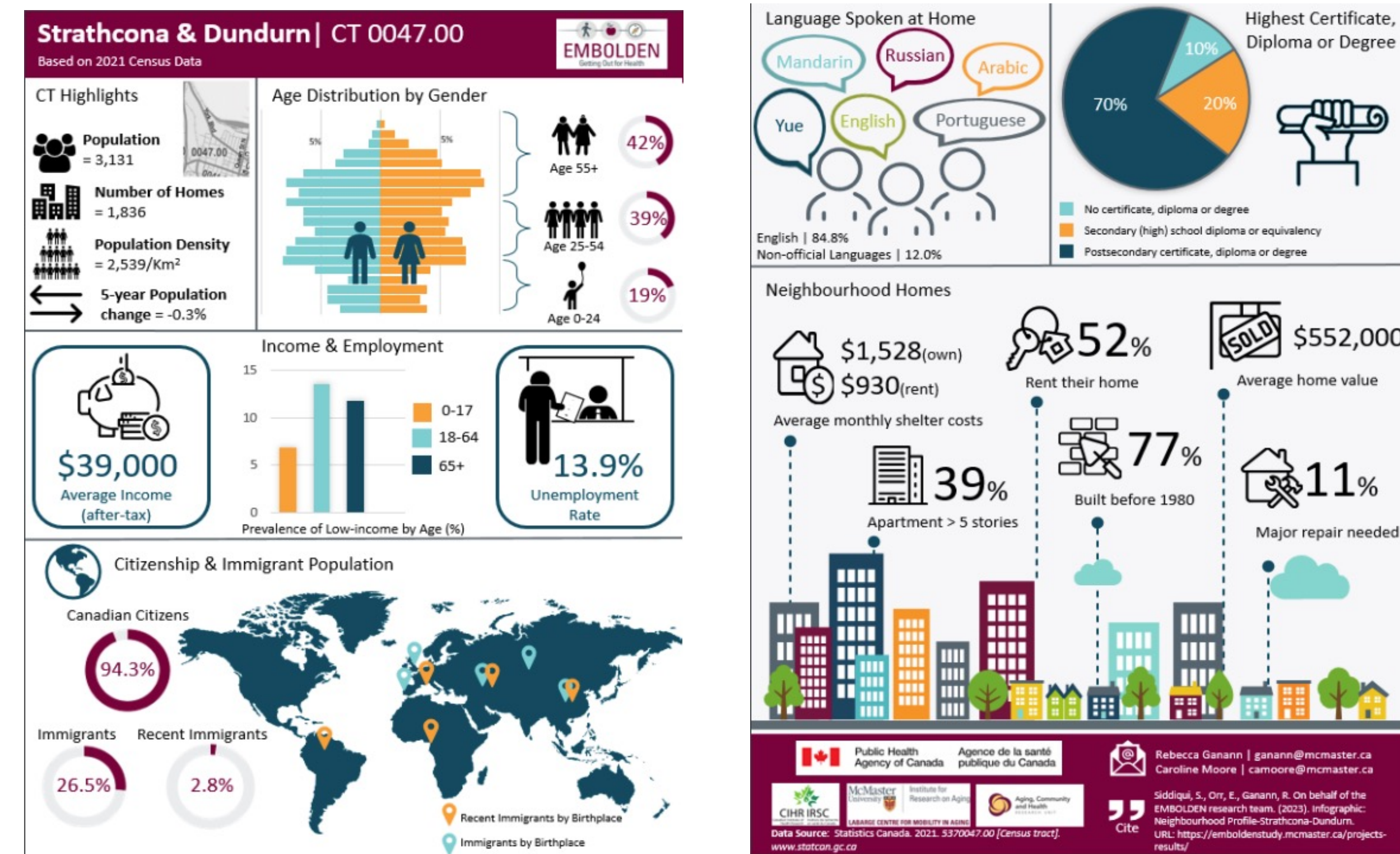


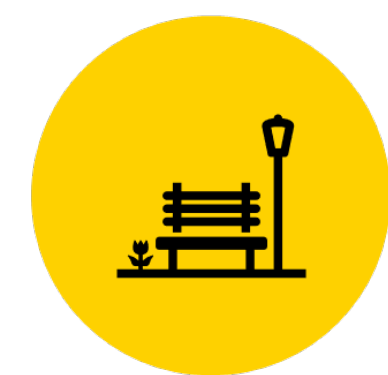
Figure 3: Example of knowledge translation infographics created for the Strathcona neighbourhood.

Conclusions

Environmental scanning better aligns program design with existing services and leverageable assets. Scanning was critical to understanding the context for the EMBOLDEN intervention, creating a relevant program and informing program implementation and adaptations for each study site.



Research Evidence



Assets and gaps in the community



Content experts



Lived experiences of older adults and local service providers

Co-design of EMBOLDEN

Acknowledgements

The EMBOLDEN team acknowledges the valuable contributions of our citizen and community partners to the research program.

This work is supported by funding from the Labarge Centre for Mobility in Aging within the McMaster Institute for Research on Aging at McMaster University, the Public Health Agency of Canada, the MIRA Dixon Hall Centre, and the Canadian Institutes for Health Research. In-kind support provided by the Aging, Community and Health Research Unit and the School of Nursing at McMaster University.

References

- Statistics Canada. 2021. 5370072.03 [Census tract], Ontario and Hamilton [Census metropolitan area], Ontario (table). Census Profile.



<https://emboldenstudy.mcmaster.ca/>